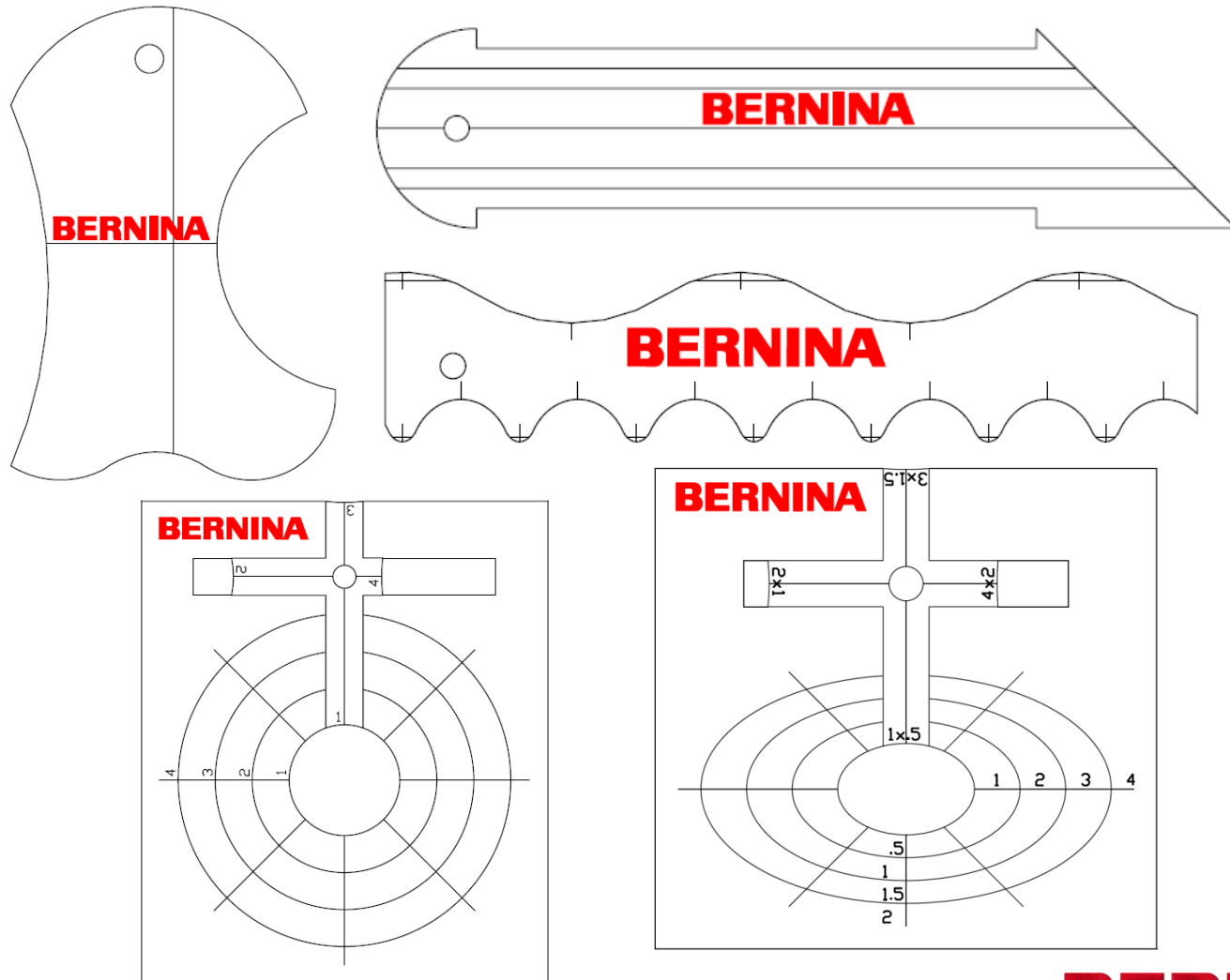


BERNINA Ruler Panel

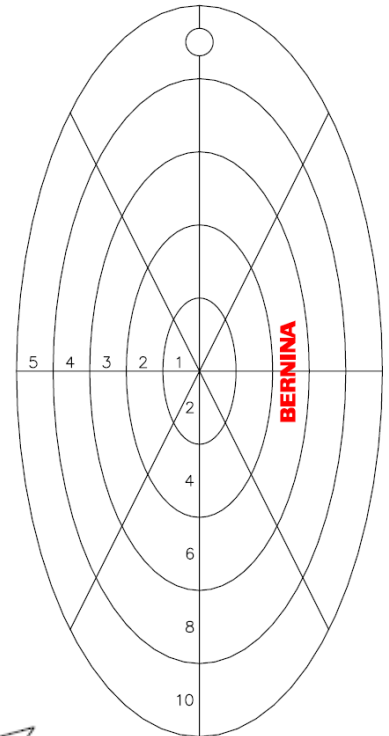
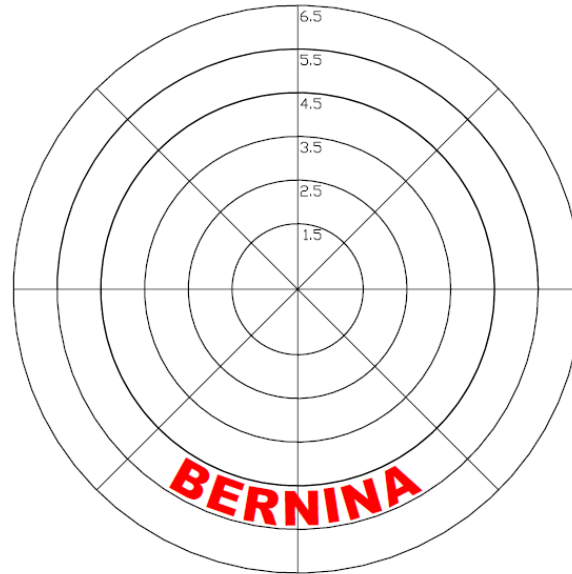
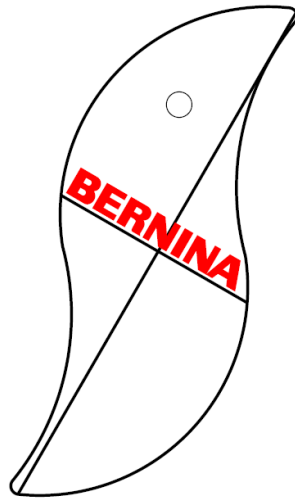
designed by Amanda Murphy



Ruler Kit for Sit-down Models



Ruler Kit for Frame Models



Supplies

- BERNINA Ruler Panel by Amanda Murphy
- Cotton backing fabric
- Batting
- White machine quilting thread
- Snips
- Rotary Cutting Ruler
- Fabric marking pen or pencil
- Pins for loading the frame
- TrueCut TrueGrips Non-slip Ruler Grips (optional)
- Supreme Slider (optional for domestic machines)
- BERNINA Ruler Foot #96 (Q Series)
- BERNINA Adjustable Ruler Foot #72 (BERNINA Domestic Machines)
- BERNINA Ruler Start Kit for the Frame and Sit-down
- BERNINA Ruler Base (for Q Series with Frame only)
- One BERNINA Q Series or domestic Bobbin

Rulers used in Panel

- Straight Line Tool
- Starter Tool (optional)
- Mini 4-in-1 Tool
- 1-1/2" Circle
- 2-1/2" Circle
- 3-1/2" Circle
- 2"X4" Oval
- 4"X8" Oval
- Squiggle Tool



Step 1: Basting

Straight Line or Starter Tool

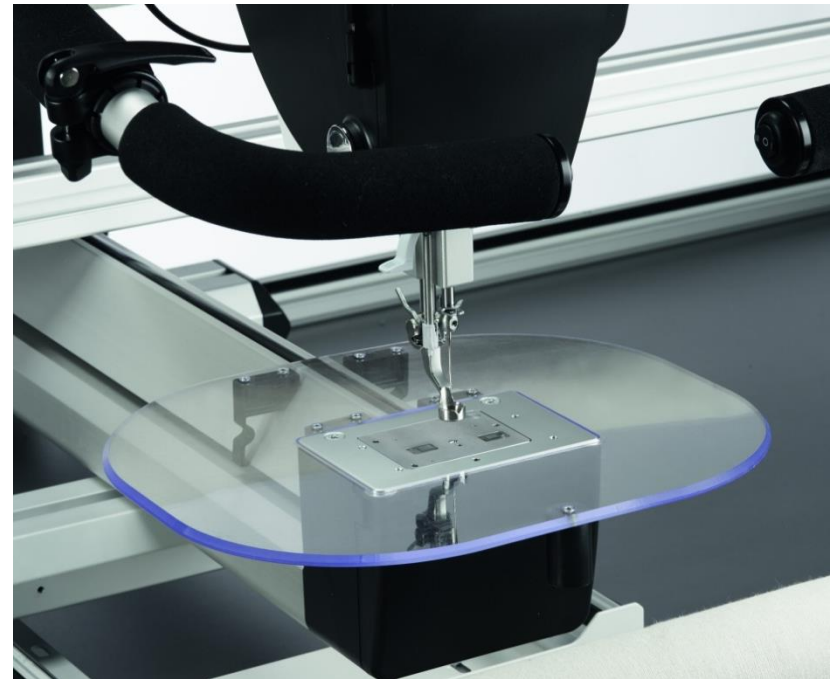
- For the Q 24, baste along the edges and the top of quilt top to secure it, making sure it is parallel to leveling bar.
- For Q 20 and domestics, pin baste or spray baste the quilt top to the batting and backing.



Step 2: In-the-ditch Quilting

Straight Line or Starter Tool

- Stitch “in the ditch” at the top and between the first and second rows if you are on the Q 24.
- Quilt between all rows if you are on the Q 20 or a domestic machine.



Step 3: Piano Keys

Straight Line or Starter Tool

→ Quilt up and down the piano keys, moving across the quilt and quilting on top of previous “in the ditch” stitching.

→ *Hint: You can always travel along your “in-the-ditch” quilting lines to get from place to place on your quilt top.*



Step 4: Diamonds

Straight Line or Starter Tool

→ Starting at the green mark on either end of the quilt top, quilt from green mark to green mark across the top, forming a zig-zag row of stitching.



Step 4: Diamonds

Straight Line or Starter Tool

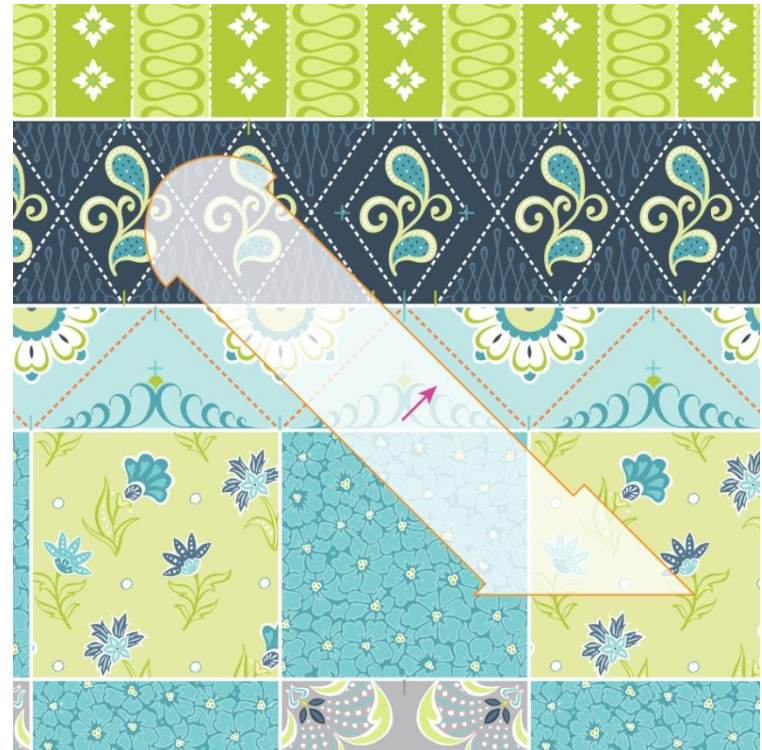
→ Quilt back across the quilt top connecting the blue marks, making sure to stop and quilt a diamond in the center.



Step 5: Triangle

Straight Line or Starter Tool

→ Starting at the aqua mark on either end of the quilt top, quilt from the upper aqua marks to the lower aqua marks across the top, forming large triangles.



Step 5: Triangle

Straight Line or Starter Tool

→ Quilt back across the quilt top connecting those same lower aqua marks with the aqua marks in the middle of the row to form the smaller triangles.



Step 6: 15-Patch

Mini 4-in-1 Tool

→ Use the shallow concave curve of the Mini 4-in-1 Tool to quilt between the corners of the aqua blocks.



Step 6: 15-Patch

Mini 4-in-1 Tool

→ Use the convex curve of the Mini 4-in-1 Tool to quilt between the corners of the green blocks.



Step 6: 15-Patch

Mini 4-in-1 Tool

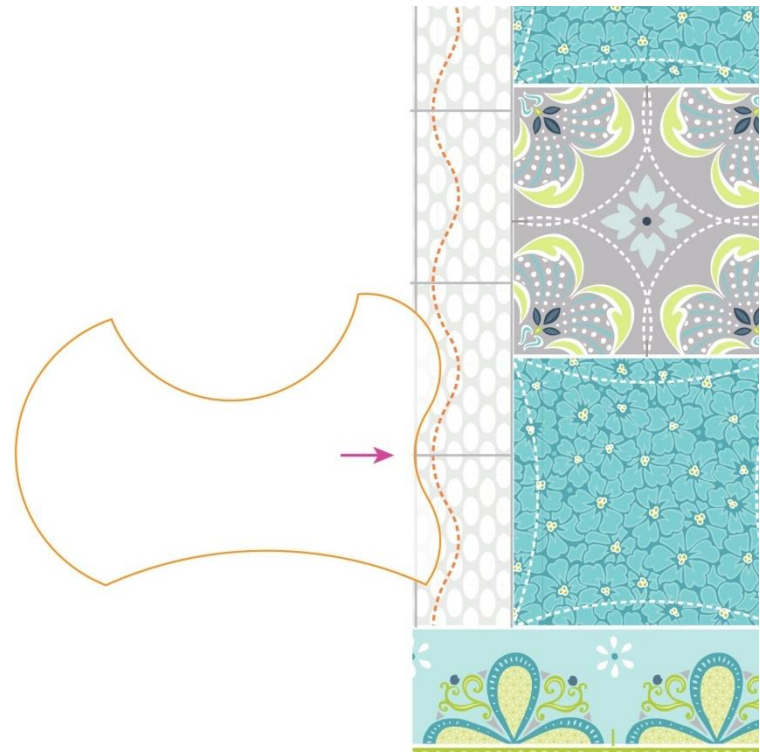
→ Use the deep concave curve of the Mini 4-in-1 Tool to quilt between the center side markings of the grey blocks.



Step 7: Sashing

Mini 4-in-1 Tool

→ Quilt down one side of the sashing on the left of the 15-patch blocks using the curvy side of the Mini 4-in-1 Tool, aligning the intersections of the grey lines with its inner curve as shown.



Step 7: Sashing

Mini 4-in-1 Tool

→ Quilt up the right side of that sashing in a similar manner.



Step 7: Sashing

Mini 4-in-1 Tool

→ Quilt down one side of the sashing on the right side of the 15-patch blocks using the curvy side of the Mini 4-in-1 Tool, aligning the intersections of the grey lines and the edge of the 15-patch blocks with its inner curve as shown.



Step 7: Sashing

Mini 4-in-1 Tool

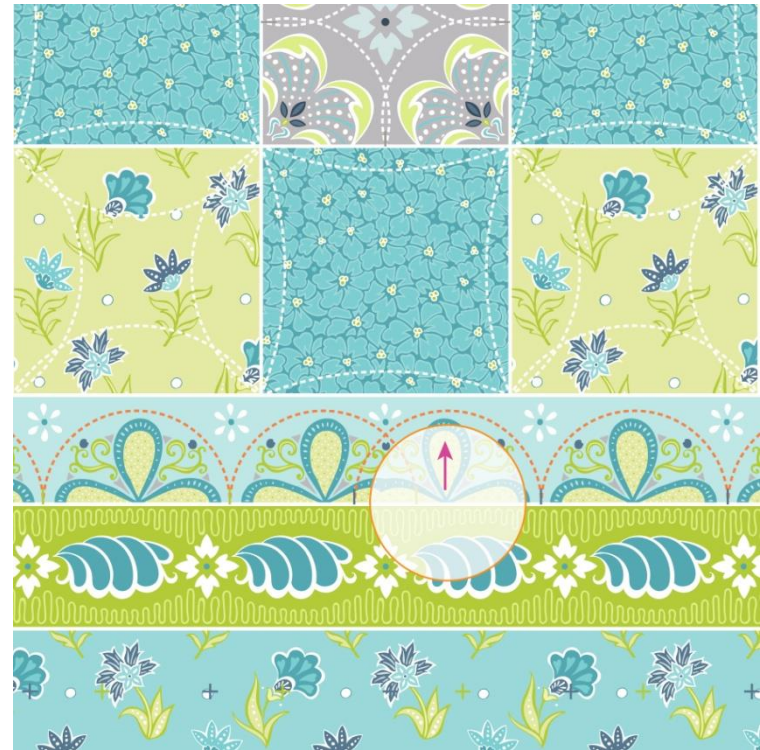
→ Quilt up the sashing, positioning the Mini 4-in-1 Tool to offset the first line of quilting.



Step 8: Clamshells

2-1/2" Circle

- Starting on the left, use the 2-1/2" Circle Tool to connect the green marks with the clamshell shapes.
- When you get to the last green mark, backtrack along the “in-the-ditch” quilting to the first navy mark and continue.



Step 9: Petals

3-1/2" Circle

→ Use the 3-1/2" Circle Tool to connect the little dots in the middle of the white flowers with wavy lines from left to right.



Step 9: Petals

3-1/2" Circle

→ Alternate the position of the circle from the top to the bottom of the wave shape as shown.



Step 9: Petals

3-1/2" Circle

→ Travel back from right to left to form petal shapes.



Step 10: Waves

3-1/2" Circle

→ Use the 3-1/2" Circle to connect the blue marks from left to right.



Step 10: Waves

3-1/2" Circle

→ Alternate the position of the template from the top to the bottom of the wave shape.



Step 10: Waves

3-1/2" Circle

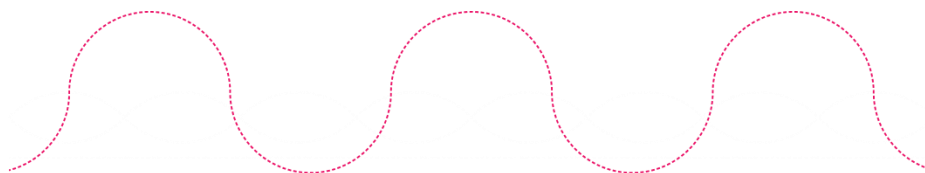
→ Travel back from right to left to connect the green marks to form petal shapes.



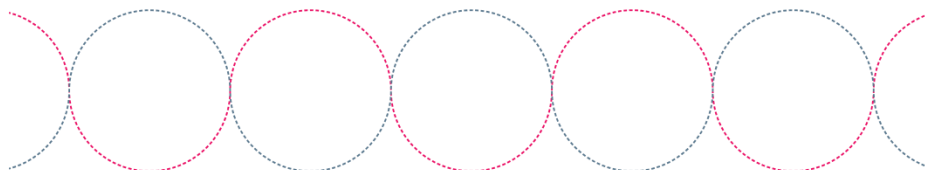
Step 11: Orange Peels

3-1/2" Circle

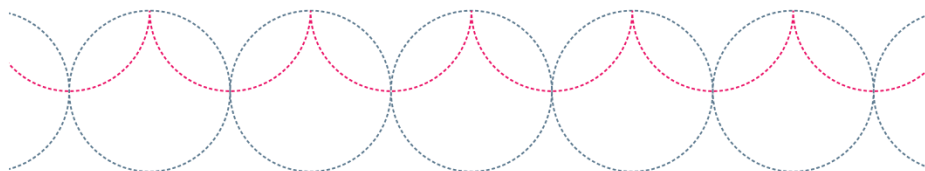
STEP 1



STEP 2



STEP 3



STEP 4



Step 11: Orange Peels

3-1/2" Circle

→ Starting at the top left corner of the row, use the 3-1/2" Circle Tool to connect the centers of the flowers in an "S" curve from left to right.

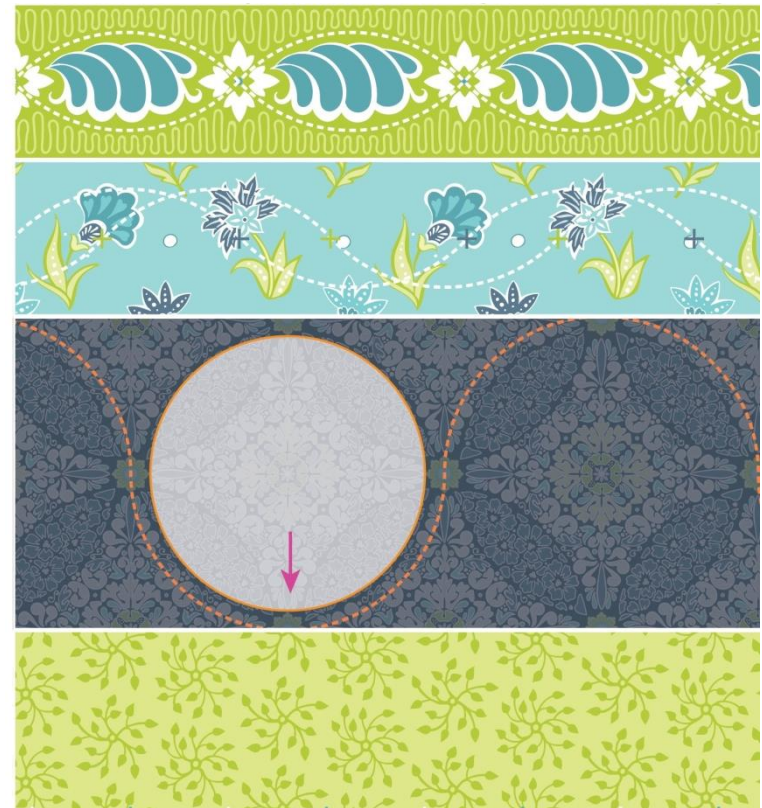
→ Alternate the stitching from top to bottom of the Circle Tool.



Step 11: Orange Peels

3-1/2" Circle

- Starting at the top left corner of the row, use the 3-1/2" Circle Tool to connect the points of the orange peel from left to right.
- Alternate the stitching from top to bottom to form a figure-8 shape.



Step 11: Orange Peels

3-1/2" Circle

→ Travel back from right to left to complete the figure-8 shape.



Step 11: Orange Peels

3-1/2" Circle

→ Make another pass from left to right to complete the orange peels on the top of the row.



Step 11: Orange Peels

3-1/2" Circle

→ Travel back from right to left to complete the orange peels on the bottom of the row.



Step 12: Scallops

2"X4" Oval

- Starting at the left side of the row, use the 2"X4" Oval Tool oriented vertically to connect the white marks. Align the center of the oval on the bottom of the row.
- Work back from right to left in a similar manner to connect the aqua marks.



Step 13: Ovals and Diamonds

2"X4" Oval

→ Starting at the left side of the row, use the 2"X4" Oval Tool oriented horizontally to connect aqua marks on the bottom of the row. Align the center of the oval on the bottom of the row.



Step 13: Ovals and Diamonds

2“X4“ Oval

→ Work back from right to left in a similar manner to connect the aqua marks on the top of the row.



Quilt around the blocks

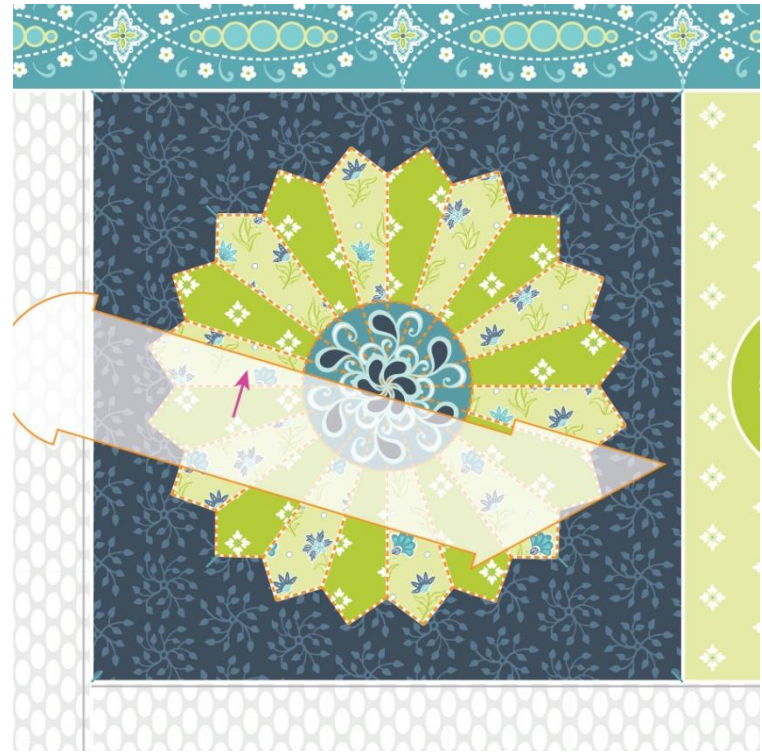
In-the-ditch Quilting

→ Quilt around the blocks
before continuing with
Steps 14-18.



Step 14: Dresden Plate Straight Line Tool and Mini 4-in-1 Tool

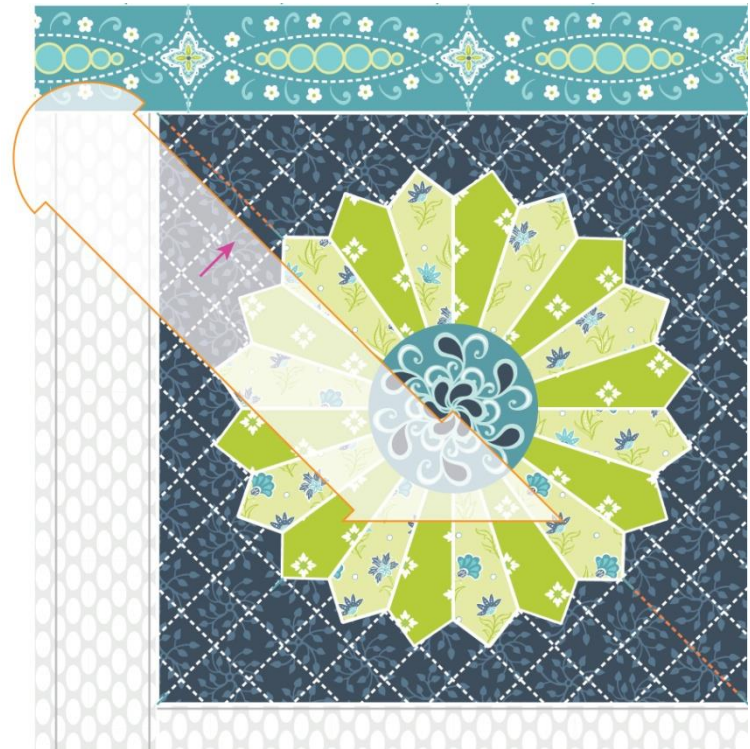
- Quilt around the Dresden Plate using the Straight Line Tool.
- Quilt around the center, using either the Mini 4-in-1 Tool or a circle to keep a smooth quilting line.



Step 14: Dresden Plate

Straight Line Tool

- Quilt a cross hatch pattern in the background using the Straight Line Tool, starting on the diagonals.
- Align the markings on the ruler with previous quilting to ensure uniformity.



Step 15: Circle Wreath

2-1/2" Circle

→ Quilt around the inner and outer edge of the wreath using the 2-1/2" Circle Tool.



Step 15: Circle Wreath

1-1/2" Circle

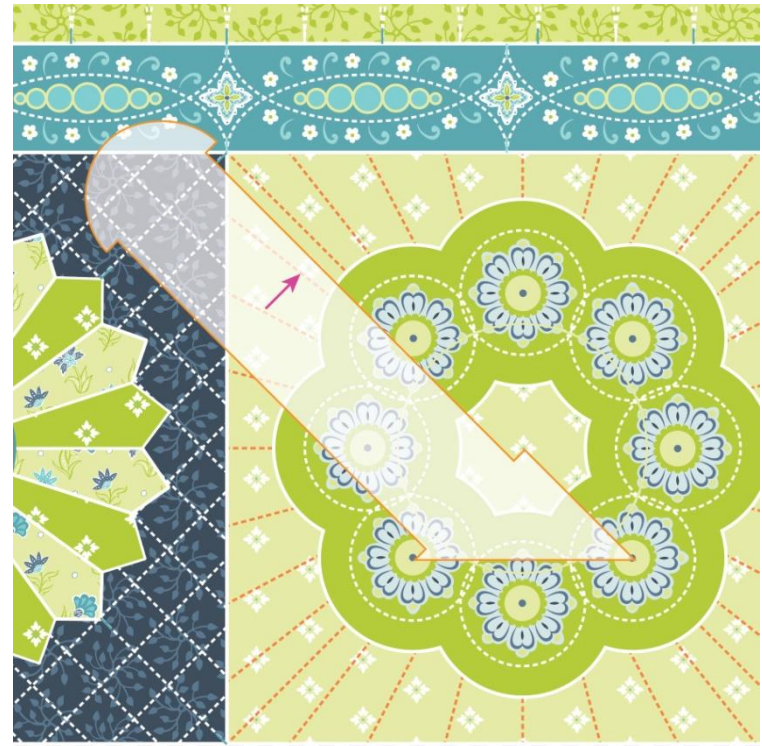
- If desired, quilt around each flower using the 1-1/2" Circle Tool aligning it with the white marks as shown.
- Quilt over your previous quilting lines to move from circle to circle.



Step 15: Circle Wreath

Straight Line Tool

→ Quilt rays around the edge of the wreath using the Straight Line Tool aligning it with the flower in the center of the block and various point around the outer edge of the square.



Step 16: Lemoyne Star

Straight Line Tool

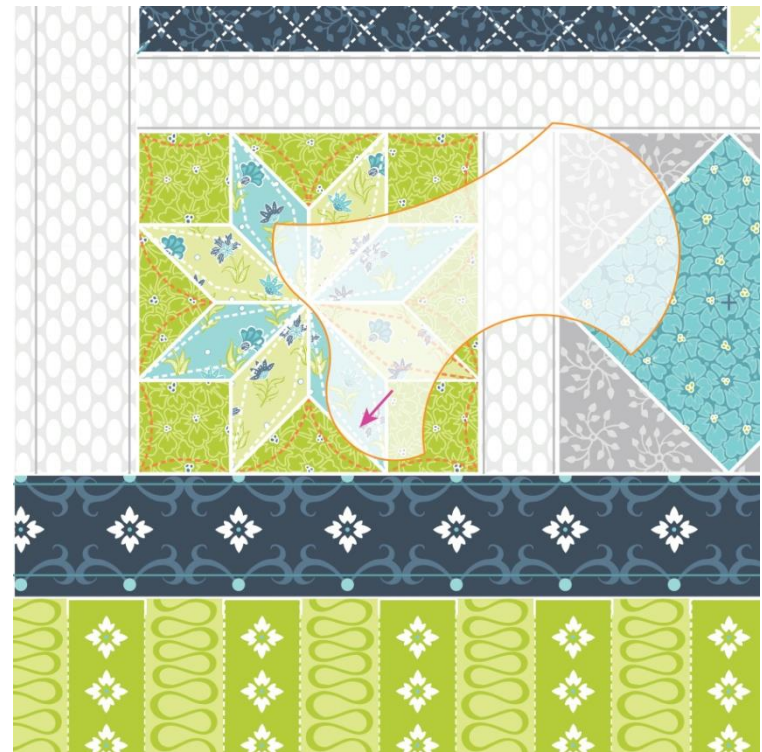
- Using the Straight Line Tool, start at the point of the star and quilt around the star and between the diamonds that make up the star.
- Quilt narrower diamonds within the diamond shapes if desired.



Step 16: Lemoyne Star

Mini 4-in-1 Tool

→ Use the wavy side of the Mini 4-in-1 Tool to “bounce” around the outline of the star and the borders.



Step 16: Lemoyne Star

Mini 4-in-1 Tool

→ Use the wavy side of the Mini 4-in-1 Tool to “bounce” around the outline of the star and the borders.



Step 17: Diamond in a Square

Straight Line Tool and Mini 4-in-1 Tool

- Starting at the corner of a diamond, quilt “in-the-ditch” around the diamond using the Straight Line Tool.
- Then “bounce” around the square using the large convex curve of the Mini 4-in-1 Tool.



Step 17: Diamond in a Square

3-1/2" Circle

→ Without ending the thread, “bounce” around the diamond using the 3-1/2” circle.



Step 17: Diamond in a Square

4"X8" Oval

- OR, “bounce” around the diamond using the 4"X8" Oval.
- Watch the center mark for help aligning the ruler.



Step 18: Crosshatching Squiggle Tool or Straight Line Tool

- For the Sit-down Kit:
Using the Squiggle Tool,
quilt one direction of a
wavy crosshatch.
- For the Frame Kit: Using
the Straight Line Tool,
quilt one direction of a
straight crosshatch.



Step 18: Crosshatching Squiggle Tool or Straight Line Tool

- Rotate the tool and quilt the other direction.
- Hint: Use painter's tape on your ruler to mark it and quilt with uniform spacing.



Step 19 :Sashing

Squiggle Tool (Optional if you have the Frame Kit)

- Orient the Squiggle Tool as shown to quilt all the sashing surrounding the blocks.
- There are alignment marks on the top and bottom or left and right in the sashing so you can hold the ruler in a comfortable manner.



Step 19 :Sashing

Squiggle Tool (Optional if you have the Frame Kit)

- Continue around the sashing.
- If you have the Frame Kit, quilt using the Straight Line Tool.



Step 20: Ogees

Squiggle Tool (Optional if you have the Frame Kit)

→ Using the Squiggle Tool, hold the ruler below the foot and align the dips in the curve with the bottom aqua horizontal line on the fabric to quilt from left to right across the quilt top.



Step 20: Ogees

Squiggle Tool (Optional if you have the Frame Kit)

- Quilt back from right to left, holding the ruler above the foot and aligning the dips of the curve with the top aqua horizontal line.
- If you have the Frame Kit experiment with the circles for a similar effect.



Step 21: Piano Keys

Squiggle Tool or Starter Tool

→ Quilt a piano key border at the bottom of the panel, as you did for the top.



Finish!

Finish your quilt

→ Remove the quilt, square up and bind as usual.

→ Enjoy!

